

CEILING TYPES

- △ ACUSTICAL TILE 2'x4'
- △ ACUSTICAL TILE 2'x4' - 1 HOUR FIRE-RATED
- △ 5/8" GYPSUM BOARD
- △ 5/8" GYPSUM BOARD - 1 HOUR FIRE-RATED
- △ ACUSTICAL TILE 2'x4'

SYMBOLS

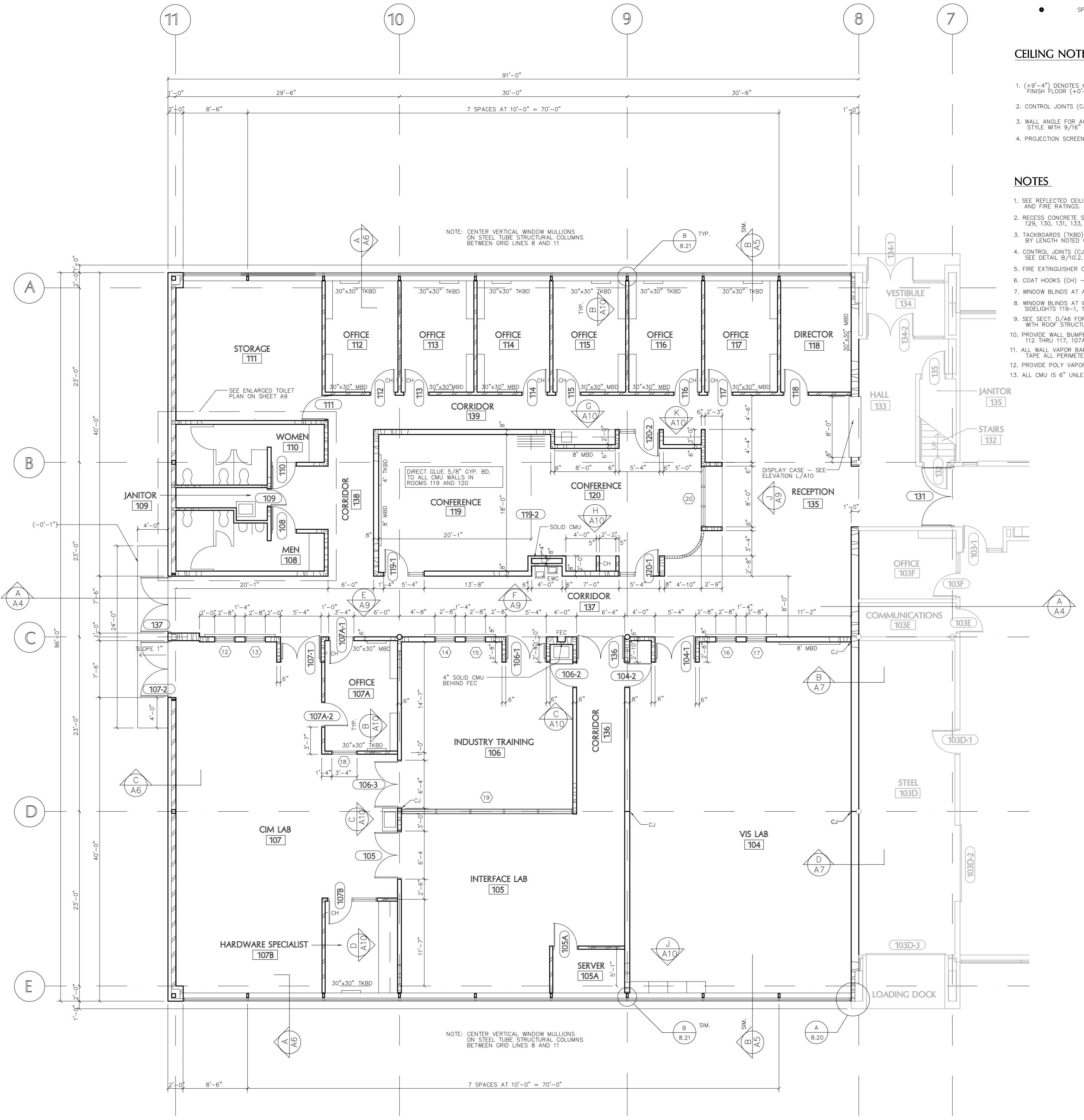
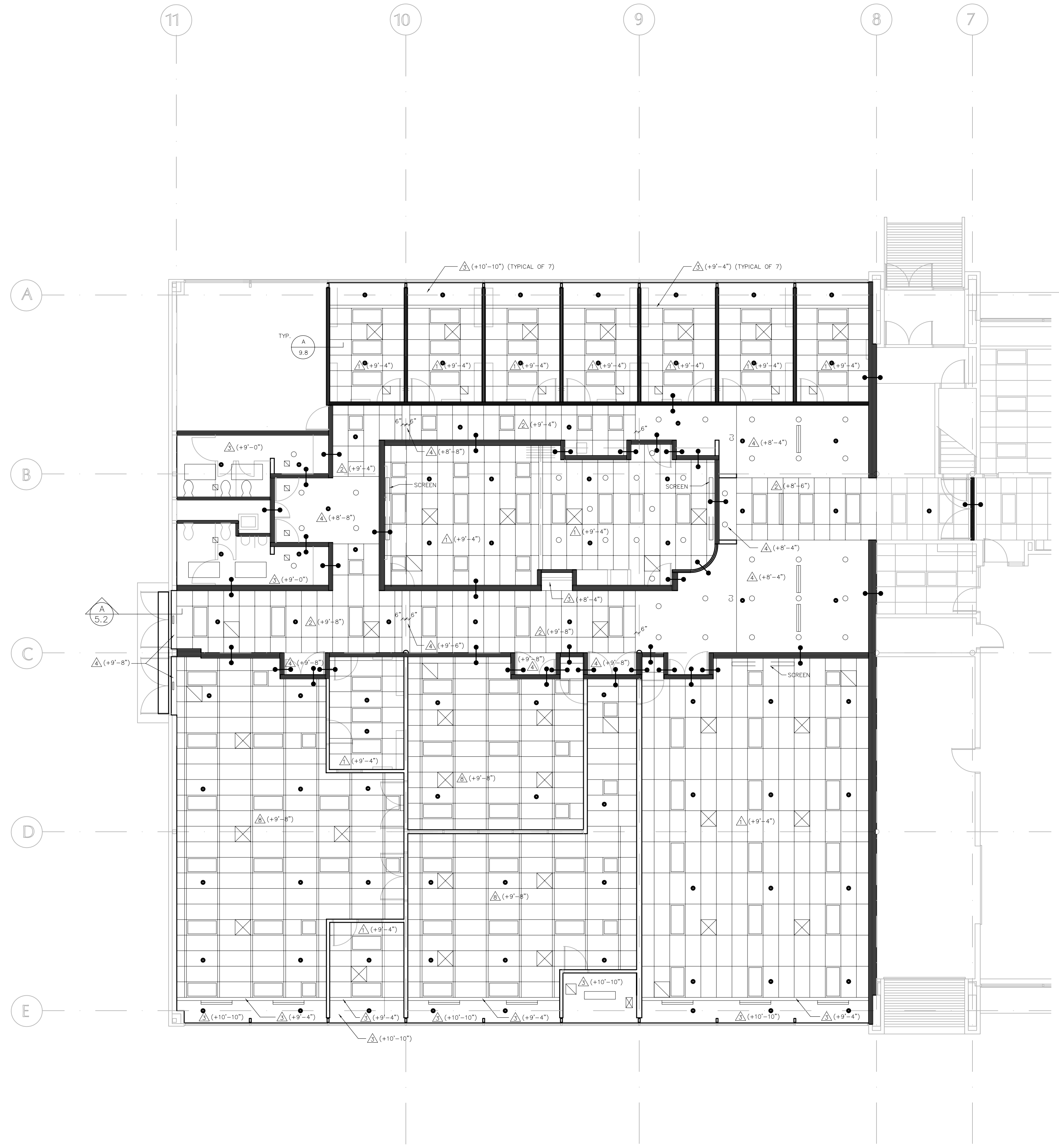
- FULL HEIGHT PARTITION - SEE DETAILS A/5.1 AND A/5.1 FOR TYP. CONNECTION AT ROOF
- PARTITION HEIGHT TO APPROX. 4" ABOVE CEILING. STOP MASONRY AT FIRST COARSE ABOVE CEILING - BRACE ALL WALLS OVER 12 FEET LONG - SEE DETAIL B/5.1
- SPRINKLER HEAD IN CEILING

CEILING NOTES

1. (+9'-4") DENOTES HEIGHT OF BOTTOM OF CEILING ABOVE FINISH FLOOR (+0'-0").
2. CONTROL JOINTS (CJ) FOR GYP. WALLBOARD SHALL BE DETAIL A/9.5.
3. WALL ANGLE FOR ACUSTICAL CEILING SHALL BE NARROW STYLE WITH 9/16" FACE.
4. PROJECTION SCREENS ARE BY OWNER.

NOTES

1. SEE REFLECTED CEILING PLAN FOR PARTITION HEIGHTS AND FIRE RATINGS.
2. RECESS CONCRETE SLAB FOR FLOOR FINISH IN ROOMS 123, 125, 126, 130, 131, 133, AND 134.
3. TACKERS/BRIDS (TBR) AND MARKER BOARDS (MBO) ARE 4" HIGH BY LENGTH NOTED ON PLAN UNLESS NOTED OR SHOWN OTHERWISE.
4. CONTROL JOINTS (CJ) IN INTERIOR MASONRY PARTITION SEE DETAIL B/10.2.
5. FIRE EXTINGUISHER CABINETS (FEC) - SEE DETAIL A/10.4.
6. COAT HOOKS (CH) - SEE DETAIL B/10.3.
7. WINDOW BLINDS AT ALL EXTERIOR WINDOWS BY OWNER.
8. WINDOW BLINDS AT INTERIOR WINDOWS 12, 17, 20 AND SLEIGHTS 119-1, 120-1, 120-2 BY OWNER.
9. SEE SECT. D/16 FOR FULL HEIGHT MASONRY WALL INTERSECTION WITH ROOF STRUCTURE.
10. PROVIDE WALL BUMPER GUARDS AT 36" TOP AFF IN ROOMS 112 THRU 117, 107A, 107B.
11. ALL WALL VAPOR BARRIERS SHOWN ON DRAWINGS ARE POLY. FACE ALL PERIMETERS TO STRUCTURE.
12. PROVIDE POLY VAPOR BARRIER BELOW BUILDING SLABS ON GRADE.
13. ALL CMU IS 6" UNLESS NOTED OTHERWISE.



REFLECTED CEILING PLAN (ALTERNATE NO. 1)
1/8"=1'-0"

FLOOR PLAN (ALTERNATE NO. 1)
1/8"=1'-0"



ADVANCED TECHNOLOGY CENTER - DMACC
ANKENY, IOWA

A11