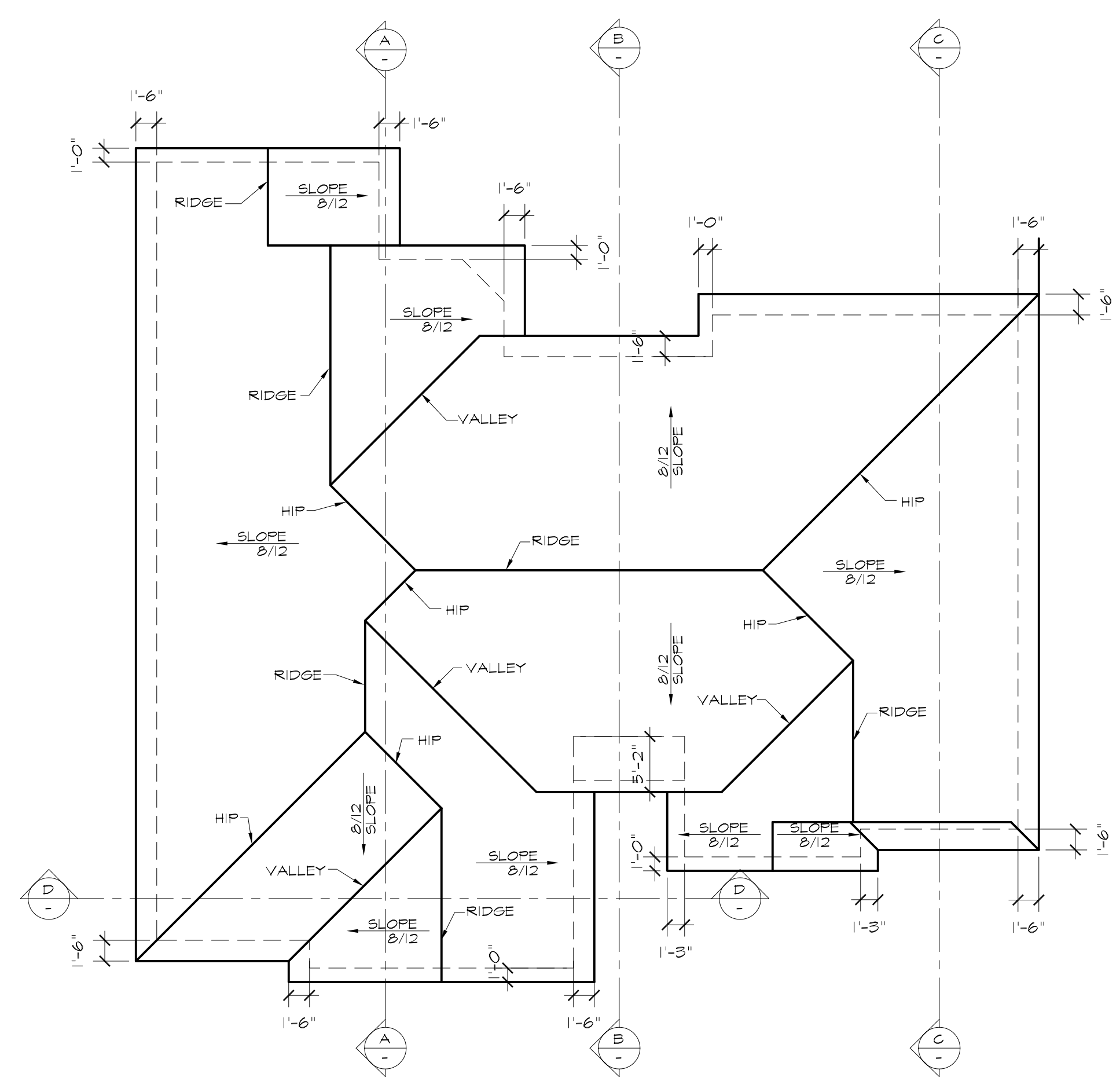
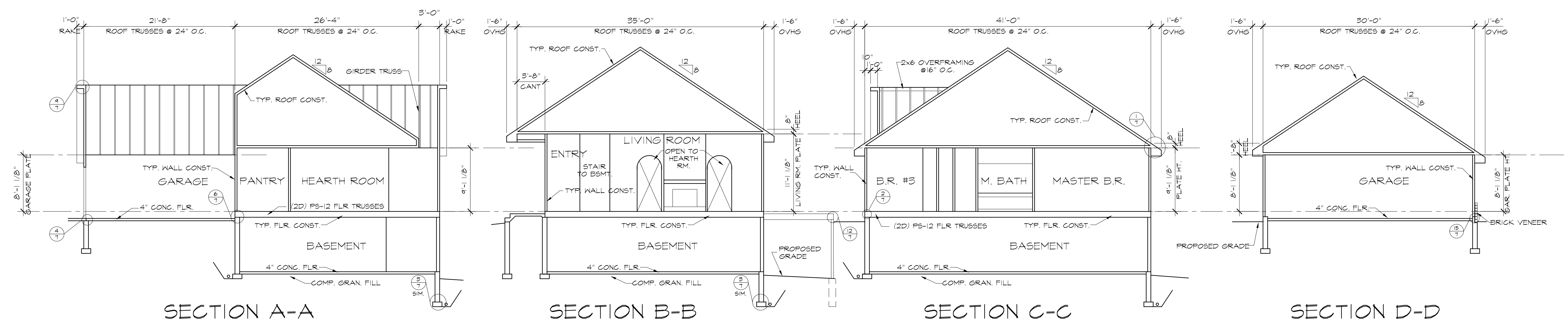


COPYRIGHT BLOODGOOD PLAN SERVICE  
 THESE WORKING DRAWINGS ARE PROVIDED TO MAKE  
 THE FULL DETAILS OF THE BUILDING AVAILABLE TO  
 THE PURCHASER. THEY MAY ALSO BE USED AS  
 CONSTRUCTION DOCUMENTS. ALL NOTES AND DOCUMENTS  
 ARE SUBJECT TO CHANGE ACCORDING TO CODES,  
 BUILDING REQUIREMENTS, AND/OR SITE CONDITIONS.  
 ANY FORM OF DIRECT REPRODUCTION OF THIS DESIGN  
 IN WHOLE OR IN PART IS STRICTLY PROHIBITED



**ROOF PLAN**  
 SCALE: 1/8" = 1'-0"



**BUILDING SECTIONS**  
 SCALE: 1/8" = 1'-0"

TYPICAL FLOOR  
 Finish floor on  
 3/4" T&G GDX  
 plywood sub-floor screwed  
 and glued on floor framing

TYPICAL ROOF  
 Minimum 255# asphalt  
 shingles on 15# felt on  
 1/2" GDX plywood sheathing  
 on Roof framing

TYPICAL WALL  
 XGD or Hardboard lap siding on  
 3/4" rigid insulation sheathing (R-5)  
 on 2x4 studs @ 16" O.C. with  
 Batt insulation (R-13)  
 INTERIOR- 1/2" gypsum board on  
 6 mil. vapor barrier

**HDBG 97001**

**BLOODGOOD PLAN SERVICE**  
 400 LOCUST STREET, SUITE 265 DES MOINES, IA 50309 PH. (515) 283-0404

Date:
Drawn By:
Revisions:

**SHEET**  
 5 OF 7